



## [MGN Logistics FedEx 2024 Rate Increase Review](#)

FedEx service rates will increase by an *average* of 5.9% for FedEx Ground and Express in 2024. When it comes to carrier increases, it is very important to understand that they affect all shippers differently. The true impact you experience will depend on your business' unique shipping characteristics. Most businesses will see a higher than 5.9% increase in their parcel cost.

In addition to the general 5.9% rate increase, FedEx has announced that various Accessorial Charges and Value-Added Services will be increasing.

Customers that ship larger packages will feel another impact this year. Additional Handling and Oversize charges are greatly increasing by about 20%. Additional Handling has increased by double-digits five out of the last seven years and Oversize Charge six of the last seven!

Another noteworthy change is the increase to their Minimums in the Overnight Services. The minimum published charges for Priority Overnight and Standard Overnight will be increasing 7.88% and 7.50%, respectively.

In this analysis, **MGN Logistics** will outline and illustrate percentage increases for each service. Key factors including package size, shipment weight, service selected, zones shipped to, and accessorial fees will determine the real impact to your business in 2024.

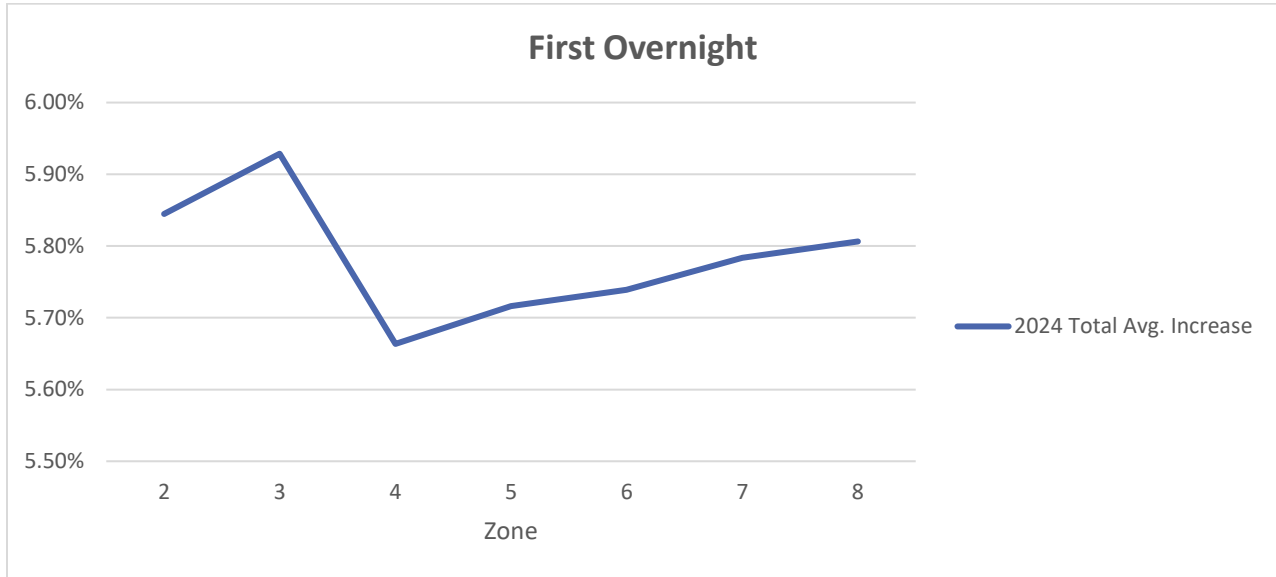
Now more than ever, you need a partner dedicated to parcel analysis and management, who has the technology and expertise to help you understand how these "average" increases will truly impact your specific shipping profile. That is exactly what we do. Knowledge is power and understanding the complexities of carrier pricing agreements is precisely why you need us. Level the playing field in your next negotiation and contact us today.

MGN Logistics – Technology, Innovation, Dedication! For more information, please visit us at [www.mgnlogistics.com](http://www.mgnlogistics.com), or email us at [sales@mgnlogistics.com](mailto:sales@mgnlogistics.com)



## Increase Overview of Services

### First Overnight 2024 Increase



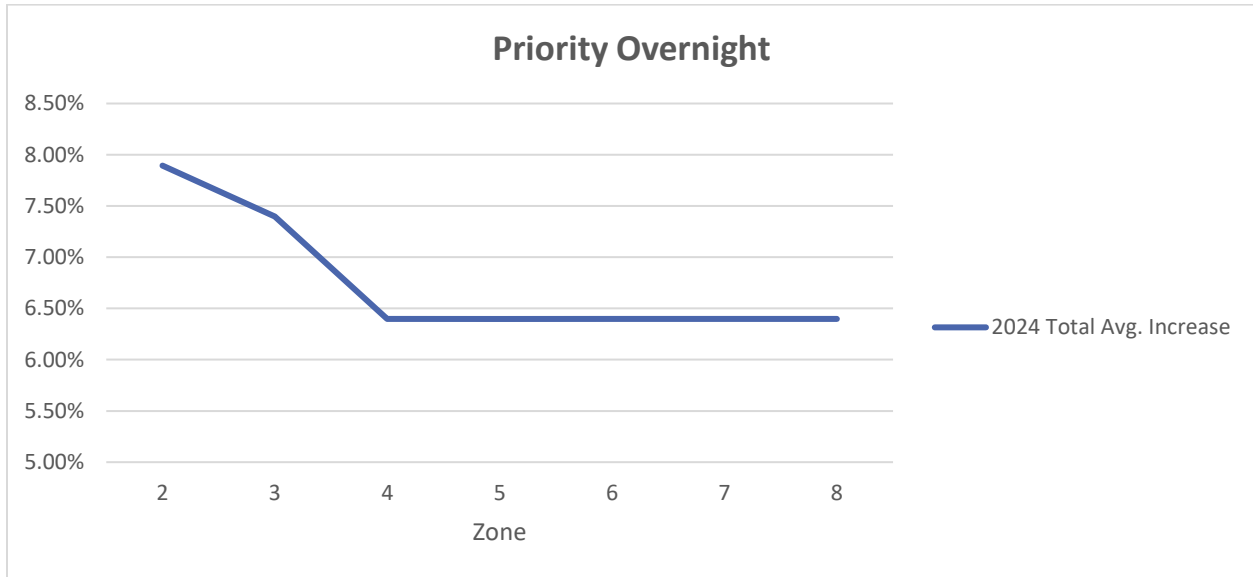
\*Average increase 1lb – 50lb for zones 2-8

### First Overnight 2024 Increase

WT (Lbs)	Zone 2	Zone 3	Zone 4	Zone 5	Zone 6	Zone 7	Zone 8
1	4.29%	4.72%	4.46%	4.59%	4.66%	4.82%	4.85%
2	4.32%	4.74%	4.58%	4.69%	4.72%	4.87%	4.97%
3	4.49%	4.90%	4.71%	4.85%	4.93%	5.04%	5.07%
4	4.65%	4.94%	4.85%	4.96%	4.99%	5.12%	5.16%
5	4.67%	4.96%	4.87%	4.96%	5.00%	5.13%	5.17%
6	4.93%	5.11%	5.01%	5.13%	5.17%	5.27%	5.31%
7	4.96%	5.19%	5.05%	5.18%	5.22%	5.31%	5.37%
8	4.96%	5.19%	5.10%	5.22%	5.26%	5.36%	5.39%
9	4.97%	5.21%	5.13%	5.22%	5.26%	5.37%	5.39%
10	4.99%	5.22%	5.14%	5.23%	5.28%	5.37%	5.40%
20	5.59%	5.74%	5.52%	5.60%	5.62%	5.68%	5.69%
30	5.94%	5.99%	5.74%	5.77%	5.79%	5.84%	5.86%
40	6.20%	6.21%	5.85%	5.88%	5.90%	5.93%	5.94%
50	6.45%	6.38%	5.91%	5.95%	5.96%	5.99%	6.01%
<b>Avg Increase</b>	<b>5.84%</b>	<b>5.93%</b>	<b>5.66%</b>	<b>5.72%</b>	<b>5.74%</b>	<b>5.78%</b>	<b>5.81%</b>



## Priority Overnight 2024 Increase



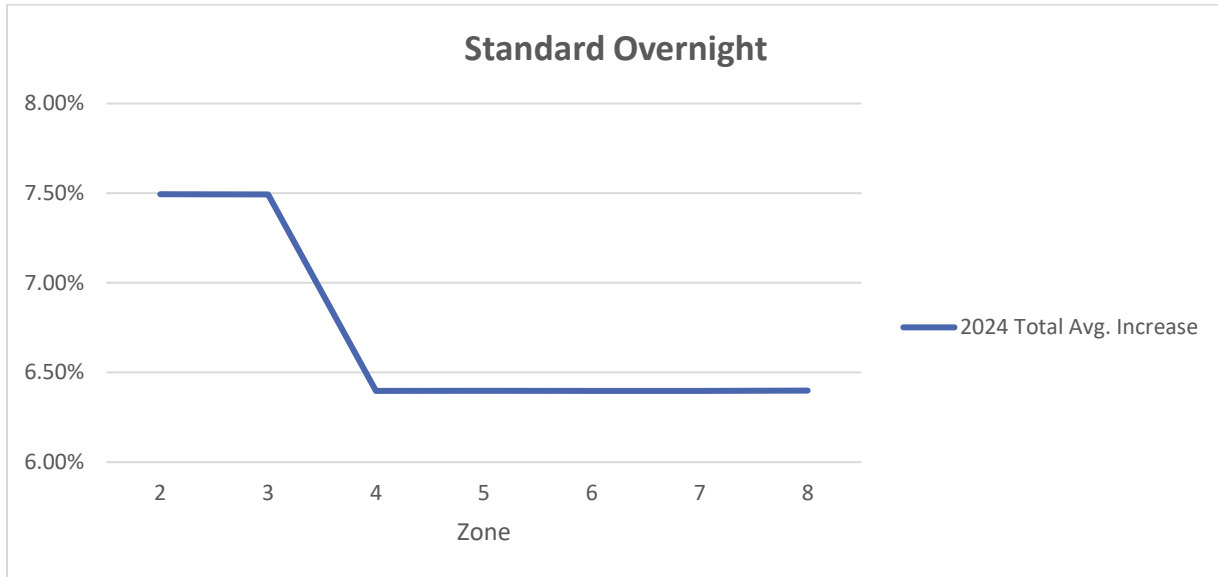
\*Average increase 1lb – 50lb for zones 2-8

## Priority Overnight 2024 Increase

WT (Lbs)	Zone 2	Zone 3	Zone 4	Zone 5	Zone 6	Zone 7	Zone 8
1	7.88%	7.39%	6.39%	6.39%	6.39%	6.40%	6.39%
2	7.89%	7.40%	6.39%	6.40%	6.39%	6.40%	6.39%
3	7.89%	7.39%	6.40%	6.40%	6.39%	6.40%	6.40%
4	7.88%	7.39%	6.40%	6.40%	6.39%	6.39%	6.39%
5	7.88%	7.40%	6.40%	6.40%	6.40%	6.39%	6.40%
6	7.88%	7.39%	6.40%	6.39%	6.39%	6.40%	6.40%
7	7.90%	7.40%	6.39%	6.40%	6.40%	6.40%	6.40%
8	7.88%	7.39%	6.40%	6.40%	6.40%	6.40%	6.39%
9	7.88%	7.39%	6.39%	6.40%	6.39%	6.40%	6.39%
10	7.89%	7.39%	6.39%	6.39%	6.40%	6.40%	6.40%
20	7.89%	7.40%	6.40%	6.40%	6.40%	6.40%	6.40%
30	7.89%	7.40%	6.40%	6.40%	6.40%	6.40%	6.40%
40	7.89%	7.40%	6.40%	6.40%	6.40%	6.40%	6.40%
50	7.89%	7.40%	6.40%	6.40%	6.40%	6.40%	6.40%
<b>Avg Increase</b>	<b>7.89%</b>	<b>7.40%</b>	<b>6.40%</b>	<b>6.40%</b>	<b>6.40%</b>	<b>6.40%</b>	<b>6.40%</b>



## Standard Overnight 2024 Increase



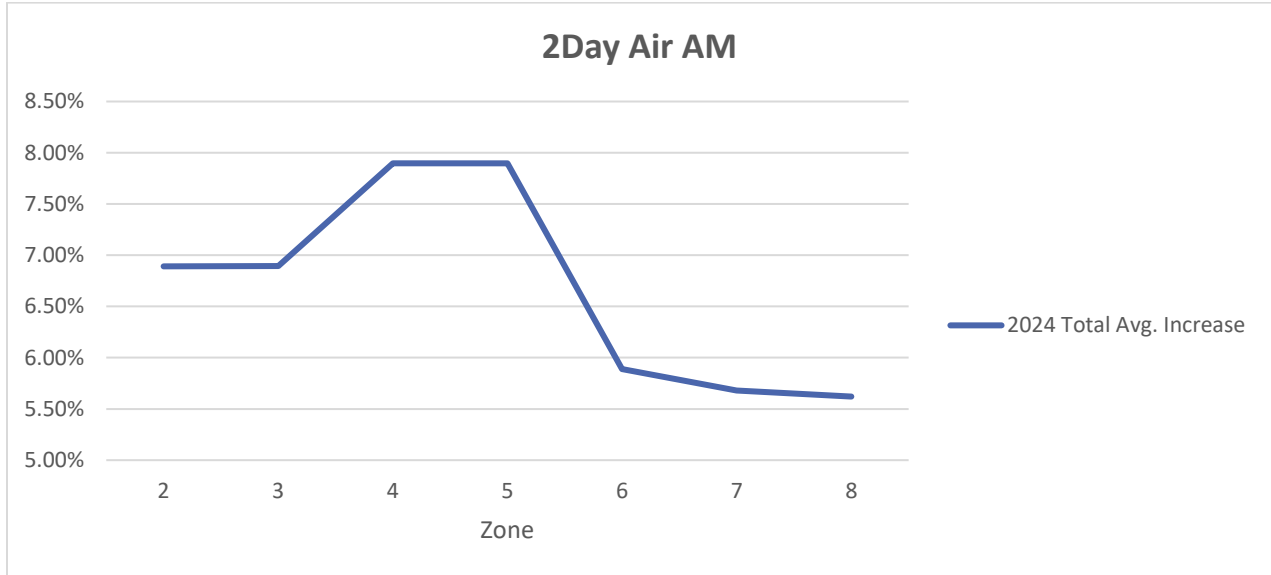
\*Average increase 1lb – 50lb for zones 2-8

## Standard Overnight 2024 Increase

WT (Lbs)	Zone 2	Zone 3	Zone 4	Zone 5	Zone 6	Zone 7	Zone 8
1	7.50%	7.50%	6.39%	6.40%	6.40%	6.39%	6.39%
2	7.47%	7.49%	6.40%	6.39%	6.40%	6.40%	6.39%
3	7.49%	7.48%	6.39%	6.40%	6.40%	6.39%	6.39%
4	7.49%	7.49%	6.40%	6.40%	6.40%	6.40%	6.39%
5	7.49%	7.50%	6.40%	6.39%	6.40%	6.40%	6.40%
6	7.50%	7.50%	6.39%	6.40%	6.39%	6.40%	6.40%
7	7.50%	7.50%	6.40%	6.39%	6.39%	6.40%	6.40%
8	7.49%	7.49%	6.40%	6.39%	6.40%	6.40%	6.40%
9	7.49%	7.49%	6.39%	6.40%	6.39%	6.40%	6.40%
10	7.49%	7.40%	6.39%	6.40%	6.40%	6.39%	6.40%
20	7.50%	7.49%	6.40%	6.40%	6.40%	6.40%	6.40%
30	7.50%	7.50%	6.40%	6.40%	6.40%	6.40%	6.40%
40	7.49%	7.50%	6.40%	6.40%	6.40%	6.40%	6.40%
50	7.49%	7.50%	6.40%	6.40%	6.40%	6.40%	6.40%
<b>Avg Increase</b>	<b>7.49%</b>	<b>7.49%</b>	<b>6.40%</b>	<b>6.40%</b>	<b>6.40%</b>	<b>6.40%</b>	<b>6.40%</b>



## 2Day Air AM 2024 Increase



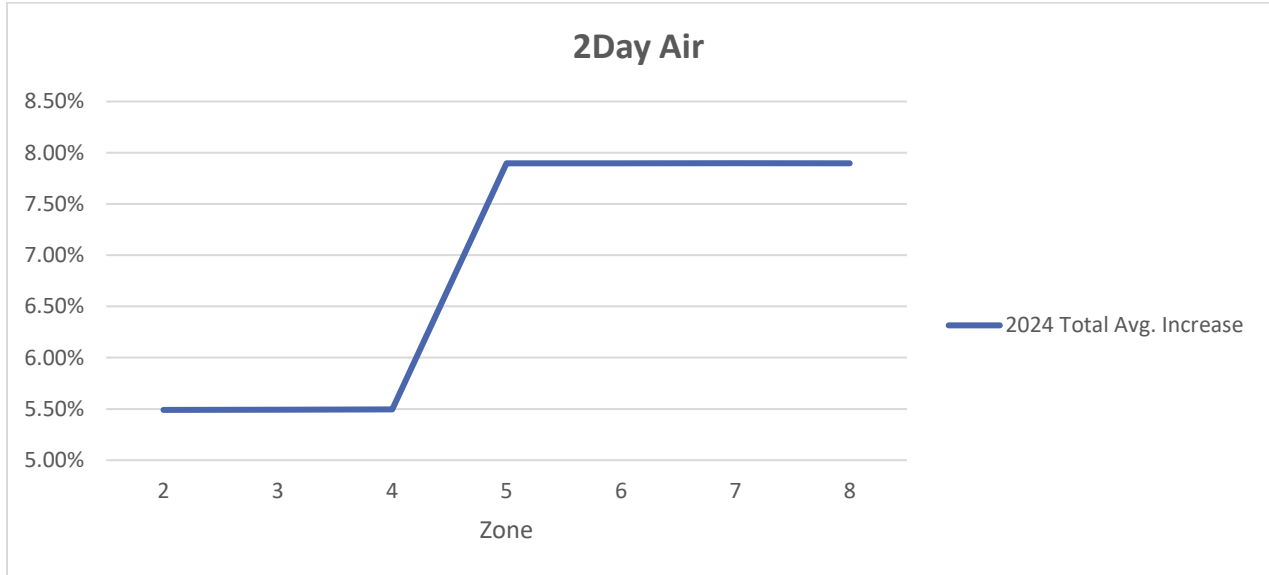
\*Average increase 1lb – 50lb for zones 2-8

## 2Day Air AM 2024 Increase

WT (Lbs)	Zone 2	Zone 3	Zone 4	Zone 5	Zone 6	Zone 7	Zone 8
1	6.90%	6.89%	7.88%	7.88%	5.89%	5.90%	5.88%
2	6.89%	6.90%	7.87%	7.90%	5.88%	5.88%	5.88%
3	6.90%	6.89%	7.88%	7.90%	5.88%	5.89%	5.90%
4	6.88%	6.90%	7.90%	7.88%	5.89%	5.90%	5.89%
5	6.87%	6.87%	7.88%	7.88%	5.90%	5.89%	5.89%
6	6.89%	6.88%	7.89%	7.88%	5.89%	5.90%	5.90%
7	6.87%	6.90%	7.90%	7.89%	5.90%	5.89%	5.89%
8	6.89%	6.89%	7.89%	7.89%	5.90%	5.89%	5.90%
9	6.88%	6.88%	7.90%	7.90%	5.90%	5.89%	5.89%
10	6.88%	6.89%	7.89%	7.90%	5.90%	5.89%	5.90%
20	6.88%	6.89%	7.89%	7.89%	5.90%	5.60%	5.50%
30	6.90%	6.90%	7.90%	7.90%	5.90%	5.50%	5.50%
40	6.89%	6.90%	7.90%	7.90%	5.90%	5.50%	5.50%
50	6.89%	6.90%	7.90%	7.90%	5.90%	5.90%	5.90%
<b>Avg Increase</b>	<b>6.89%</b>	<b>6.89%</b>	<b>7.90%</b>	<b>7.90%</b>	<b>5.89%</b>	<b>5.68%</b>	<b>5.62%</b>



## 2Day Air 2024 Increase



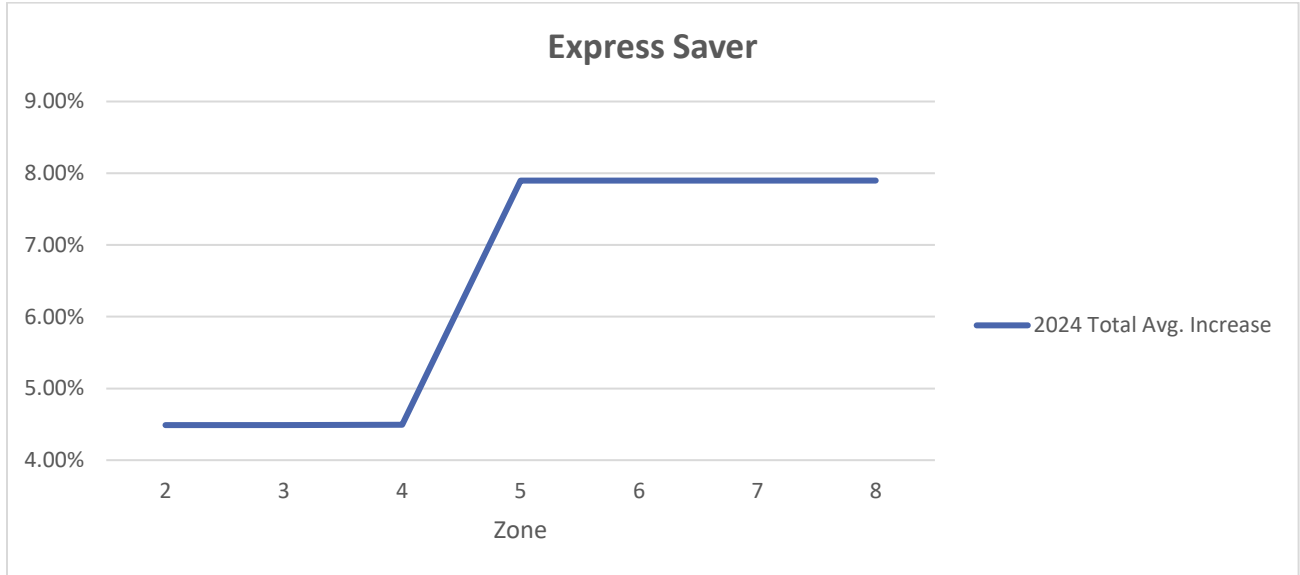
\*Average increase 1lb – 50lb for zones 2-8

## 2Day Air 2024 Increase

WT (Lbs)	Zone 2	Zone 3	Zone 4	Zone 5	Zone 6	Zone 7	Zone 8
1	5.49%	5.48%	5.50%	7.87%	7.88%	7.88%	7.88%
2	5.49%	5.46%	5.49%	7.88%	7.89%	7.90%	7.88%
3	5.48%	5.49%	5.48%	7.89%	7.90%	7.90%	7.88%
4	5.48%	5.49%	5.47%	7.88%	7.88%	7.90%	7.89%
5	5.48%	5.47%	5.48%	7.90%	7.89%	7.89%	7.90%
6	5.48%	5.48%	5.49%	7.89%	7.89%	7.89%	7.90%
7	5.48%	5.48%	5.48%	7.90%	7.89%	7.90%	7.89%
8	5.47%	5.49%	5.50%	7.89%	7.89%	7.90%	7.89%
9	5.47%	5.49%	5.48%	7.90%	7.89%	7.90%	7.90%
10	5.49%	5.49%	5.49%	7.89%	7.90%	7.89%	7.89%
20	5.48%	5.49%	5.50%	7.90%	7.89%	7.90%	7.90%
30	5.49%	5.49%	5.49%	7.90%	7.90%	7.90%	7.90%
40	5.49%	5.50%	5.49%	7.90%	7.90%	7.90%	7.90%
50	5.50%	5.49%	5.50%	7.90%	7.90%	7.90%	7.90%
<b>Avg Increase</b>	<b>5.49%</b>	<b>5.49%</b>	<b>5.49%</b>	<b>7.90%</b>	<b>7.90%</b>	<b>7.90%</b>	<b>7.90%</b>



## Express Saver 2024 Increase



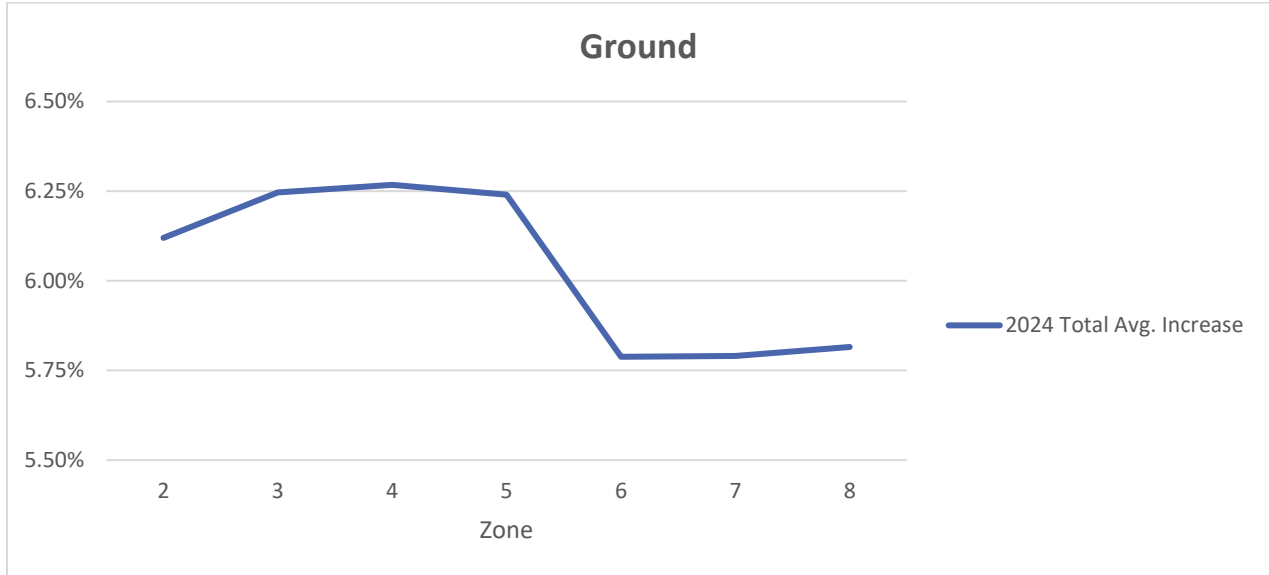
\*Average increase 1lb – 50lb for zones 2-8

## Express Saver 2024 Increase

WT (Lbs)	Zone 2	Zone 3	Zone 4	Zone 5	Zone 6	Zone 7	Zone 8
1	4.47%	4.47%	4.47%	7.88%	7.88%	7.88%	7.88%
2	4.48%	4.48%	4.48%	7.89%	7.90%	7.89%	7.89%
3	4.48%	4.49%	4.48%	7.87%	7.89%	7.88%	7.90%
4	4.49%	4.47%	4.50%	7.89%	7.89%	7.89%	7.89%
5	4.46%	4.48%	4.47%	7.88%	7.89%	7.88%	7.90%
6	4.48%	4.47%	4.47%	7.88%	7.89%	7.89%	7.89%
7	4.49%	4.47%	4.48%	7.88%	7.88%	7.89%	7.89%
8	4.47%	4.47%	4.50%	7.90%	7.89%	7.89%	7.90%
9	4.47%	4.47%	4.50%	7.90%	7.88%	7.89%	7.90%
10	4.46%	4.47%	4.48%	7.90%	7.89%	7.90%	7.89%
20	4.48%	4.50%	4.49%	7.90%	7.89%	7.90%	7.89%
30	4.49%	4.50%	4.50%	7.89%	7.90%	7.90%	7.90%
40	4.49%	4.49%	4.50%	7.89%	7.90%	7.90%	7.90%
50	4.50%	4.49%	4.49%	7.90%	7.90%	7.90%	7.90%
<b>Avg Increase</b>	<b>4.49%</b>	<b>4.49%</b>	<b>4.50%</b>	<b>7.90%</b>	<b>7.90%</b>	<b>7.90%</b>	<b>7.90%</b>



## Ground 2024 Increase



\*Average increase 1lb – 50lb for zones 2-8

## Ground 2024 Increase

WT (Lbs)	Zone 2	Zone 3	Zone 4	Zone 5	Zone 6	Zone 7	Zone 8
1	5.94%	5.80%	6.02%	6.01%	5.01%	5.99%	5.02%
2	5.78%	5.83%	6.03%	5.97%	6.01%	6.00%	6.03%
3	5.82%	5.77%	4.97%	5.01%	5.01%	4.98%	4.99%
4	5.83%	5.81%	6.04%	6.00%	5.00%	5.00%	5.00%
5	4.84%	4.81%	5.00%	4.98%	4.97%	5.01%	6.03%
6	5.79%	5.76%	5.97%	5.97%	6.00%	5.00%	6.02%
7	5.80%	5.78%	6.01%	6.03%	6.01%	4.98%	6.01%
8	5.79%	5.79%	5.36%	5.98%	4.98%	5.97%	6.02%
9	4.80%	4.81%	5.03%	5.11%	4.99%	5.01%	5.00%
10	5.77%	5.79%	5.98%	6.00%	5.98%	4.98%	5.98%
20	5.68%	5.70%	5.69%	5.72%	5.70%	5.70%	5.70%
30	5.71%	6.51%	5.68%	5.70%	5.70%	5.70%	5.69%
40	6.49%	6.51%	6.50%	6.50%	5.70%	5.69%	5.71%
50	5.80%	5.79%	6.50%	6.50%	6.60%	6.60%	6.60%
<b>Avg Increase</b>	<b>6.12%</b>	<b>6.25%</b>	<b>6.27%</b>	<b>6.24%</b>	<b>5.79%</b>	<b>5.79%</b>	<b>5.82%</b>



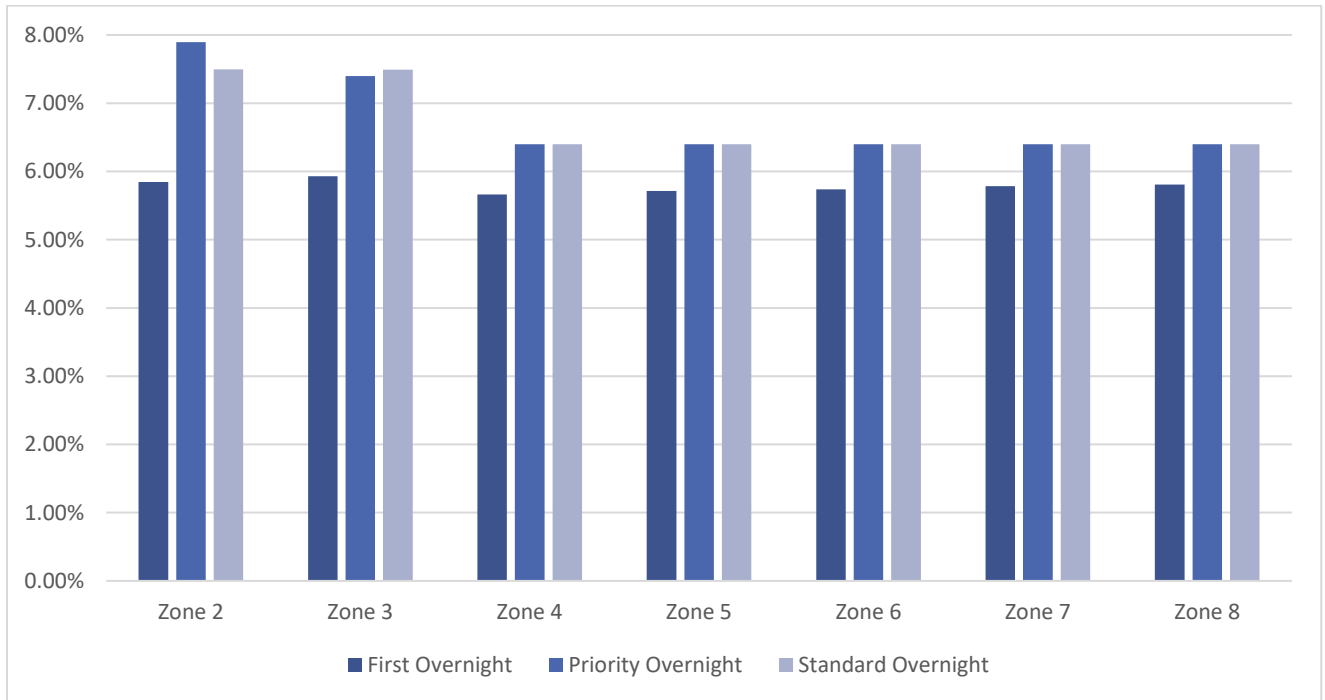


## Domestic Overnight Services Breakdown

Service	Zone 2	Zone 3	Zone 4	Zone 5	Zone 6	Zone 7	Zone 8	Average
First Overnight	5.84%	5.93%	5.66%	5.72%	5.74%	5.78%	5.81%	5.77%
Priority Overnight	7.89%	7.40%	6.40%	6.40%	6.40%	6.40%	6.40%	6.56%
Standard Overnight	7.49%	7.49%	6.40%	6.40%	6.40%	6.40%	6.40%	6.54%

\*Average increase 1lb – 50lb for zones 2-8

## Domestic Overnight Services



\*Average increase 1lb – 50lb for zones 2-8



### Average Express Services Rate Increase – Historical

Air Services								
Average Rate Increase								
Service	2017	2018	2019	2020	2021	2022	2023	2024
First Overnight	3.64%	5.26%	5.78%	5.27%	4.65%	5.72%	6.50%	5.77%
Priority Overnight	3.61%	5.46%	6.44%	5.53%	4.76%	6.33%	7.67%	6.56%
Standard Overnight	4.03%	9.30%	5.74%	5.04%	4.46%	6.45%	7.67%	6.54%
2 Day AM	5.03%	6.41%	7.56%	4.73%	7.31%	8.24%	8.54%	6.37%
2 Day	5.48%	4.74%	7.17%	5.94%	5.04%	5.06%	7.65%	7.36%
Express Saver	3.60%	6.05%	7.28%	7.10%	5.43%	9.49%	10.01%	7.01%

\*Average increase 1lb – 50lb for zones 2-8

### Average Ground Service Rate Increase - Historical

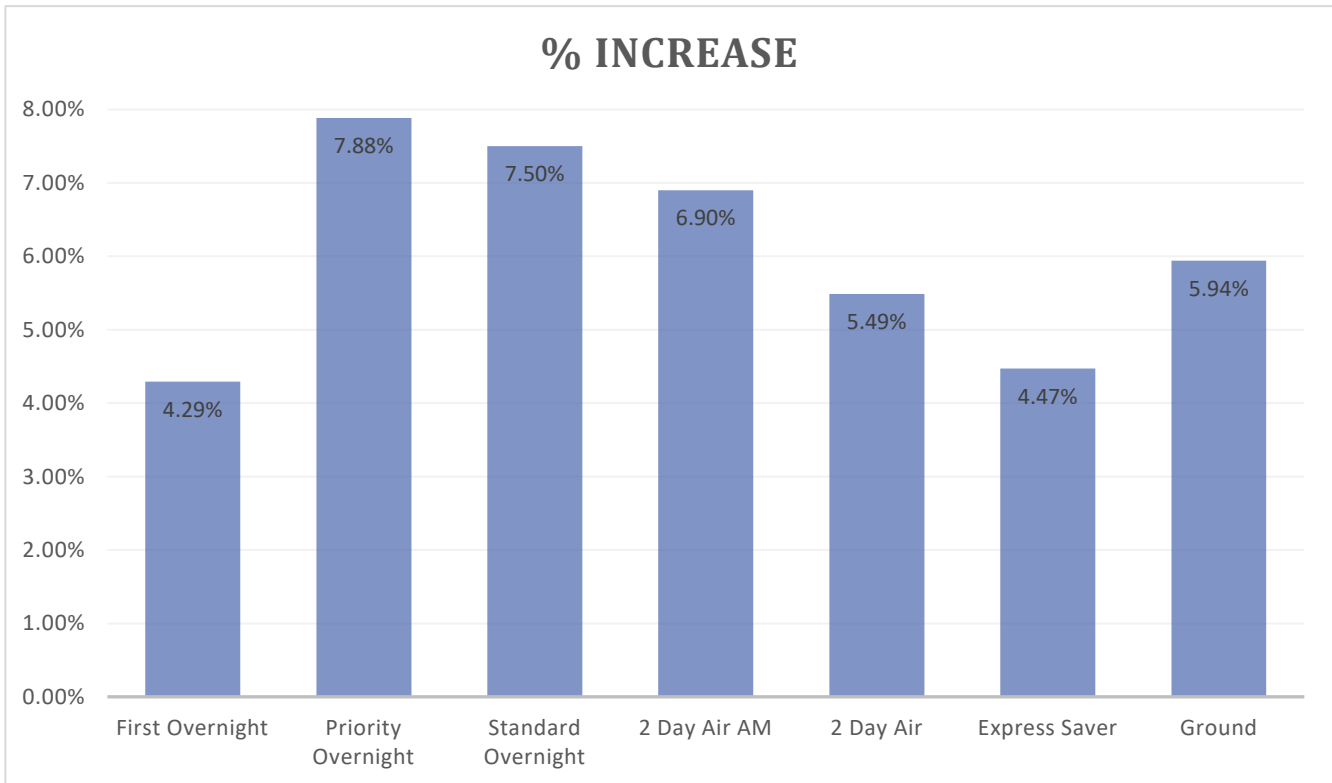
Ground Service								
Average Rate Increase								
WT	2017	2018	2019	2020	2021	2022	2023	2024
1-5 lbs.	4.88%	5.04%	3.86%	4.52%	6.56%	7.46%	7.36%	5.47%
6-10 lbs.	5.37%	5.40%	4.72%	5.29%	5.04%	6.49%	7.21%	5.60%
11-20 lbs.	5.27%	5.35%	5.04%	5.07%	4.82%	6.25%	6.95%	6.07%
21-30 lbs.	5.32%	5.24%	5.59%	4.98%	4.70%	5.94%	7.11%	5.93%
31-70 lbs.	4.95%	4.80%	5.58%	5.35%	5.07%	5.91%	7.46%	3.62%
71-150 lbs.	4.18%	4.04%	4.68%	4.69%	4.74%	5.82%	7.14%	6.37%

\*Average increase 1lb – 50lb for zones 2-8



### 5 Year Historical Minimum Charge Overview

Service	Min Net 2017	Min Net 2019	Min Net 2020	Min Net 2021	Min Net 2022	Min Net 2023	Min Net 2024	\$ Increase	% Increase
First Overnight	\$55.59	\$59.18	\$60.31	\$62.76	\$65.14	\$68.04	\$70.96	\$2.92	4.29%
Priority Overnight	\$26.59	\$29.18	\$30.31	\$31.76	\$34.14	\$37.04	\$39.96	\$2.92	7.88%
Standard Overnight	\$24.59	\$27.18	\$28.24	\$29.05	\$31.22	\$33.87	\$36.41	\$2.54	7.50%
2 Day Air AM	\$18.41	\$19.71	\$20.47	\$21.48	\$23.52	\$25.37	\$27.12	\$1.75	6.90%
2 Day Air	\$16.50	\$18.22	\$19.11	\$20.04	\$21.02	\$22.59	\$23.83	\$1.24	5.49%
Express Saver	\$14.83	\$16.07	\$16.85	\$17.82	\$19.57	\$21.03	\$21.97	\$0.94	4.47%
Ground	\$7.25	\$7.85	\$8.23	\$8.76	\$9.36	\$10.10	\$10.70	\$0.60	5.94%





## FedEx Accessorial Changes – Overview

Additional Handling (US 48 Ground and Express)	Zone	2023	2024	% Increase
Dimension	2	\$18.50	\$22.00	18.92%
Dimension	3-4	\$20.50	\$24.50	19.51%
Dimension	5-6	\$22.50	\$27.00	20.00%
Dimension	7+	\$25.00	\$30.00	20.00%
<b>Dimension Avg</b>				<b>19.65%</b>

Weight	2	\$29.00	\$34.50	18.97%
Weight	3-4	\$31.50	\$37.50	19.05%
Weight	5-6	\$33.50	\$40.00	19.40%
Weight	7+	\$36.00	\$43.50	20.83%
<b>Weight Avg</b>				<b>19.62%</b>

Packaging	2	\$16.50	\$19.50	18.18%
Packaging	3-4	\$19.00	\$23.00	21.05%
Packaging	5-6	\$20.00	\$24.00	20.00%
Packaging	7+	\$21.00	\$25.00	19.05%
<b>Packaging Avg</b>				<b>19.61%</b>

Delivery Area Surcharge	2023	2024	% Increase
Express Residential	\$5.55	\$5.85	5.41%
Express Extended Residential	\$7.15	\$7.70	7.69%
Express Commercial	\$3.70	\$3.95	6.76%
Express Extended Commercial	\$4.50	\$4.90	8.89%
Ground Residential	\$5.30	\$5.70	7.55%
Ground Extended Residential	\$7.15	\$7.70	7.69%
Ground Commercial	\$3.70	\$3.95	6.76%
FedEx Ground Extended Commercial	\$4.50	\$4.90	8.89%
FedEx Home Delivery Residential	\$5.30	\$5.70	7.55%
<b>Avg Increase</b>			<b>7.47%</b>



Residential	2023	2024	% Increase
Express	\$5.80	\$6.15	6.03%
Ground & Int'l Ground	\$5.50	\$5.55	0.91%
FedEx Home Delivery	\$5.15	\$5.55	7.77%
<b>Avg Increase</b>			<b>4.86%</b>

Surcharge name	Applicable services	2023	2024
Additional Handling Surcharge	U.S. Express Package Services, U.S. Ground Services	Dimension: Zone 2: \$18.50 per package Zones 3-4 <sup>1</sup> : \$20.50 per package Zones 5-6: \$22.50 per package Zone 7+ <sup>2</sup> : \$25 per package	Dimension: Zone 2: \$22 per package Zones 3-4 <sup>1</sup> : \$24.50 per package Zones 5-6: \$27 per package Zone 7+ <sup>2</sup> : \$30 per package
	International Express Package Services	\$25 per shipment (Dimension)	Effective Jan. 1, 2024 \$25.50 per shipment (Dimension)  Effective Jan. 15, 2024 \$25.50 per package (Dimension)
	International Ground Service	\$25 per package (Dimension)	\$25.50 per package (Dimension)
	U.S. Express Package Services, U.S. Ground Services	Weight: Zone 2: \$29 per package Zones 3-4 <sup>1</sup> : \$31.50 per package Zones 5-6: \$33.50 per package Zone 7+ <sup>2</sup> : \$36 per package	Weight: Zone 2: \$34.50 per package Zones 3-4 <sup>1</sup> : \$37.50 per package Zones 5-6: \$40 per package Zone 7+ <sup>2</sup> : \$43.50 per package
	International Express Package Services	\$36 per shipment (Weight)	Effective Jan. 1, 2024 \$36 per shipment (Weight)  Effective Jan. 15, 2024 \$36 per package (Weight)
	International Ground Service	\$36 per package (Weight)	\$36 per package (Weight)
	U.S. Express Package Services, U.S. Ground Services	Packaging: Zone 2: \$16.50 per package Zones 3-4 <sup>1</sup> : \$19 per package Zones 5-6: \$20 per package Zone 7+ <sup>2</sup> : \$21 per package	Packaging: Zone 2: \$19.50 per package Zones 3-4 <sup>1</sup> : \$23 per package Zones 5-6: \$24 per package Zone 7+ <sup>2</sup> : \$25 per package



Surcharge name	Applicable services	2023	2024
Additional Handling Surcharge (cont.)	International Express Package Services	\$21 per shipment (Packaging)	Effective Jan. 1, 2024 \$21.50 per shipment (Packaging) Effective Jan. 15, 2024 \$21.50 per package (Packaging)
	International Ground Service	\$21 per package (Packaging)	\$21.50 per package (Packaging)
	International Priority® Freight, International Economy® Freight	\$240 per shipment	Effective Jan. 1, 2024 \$245 per shipment Effective Jan. 15, 2024 \$245 per freight handling unit
	U.S. Express Freight Services	\$240 per freight handling unit	\$255 per freight handling unit
Additional Handling Surcharge – Non-Stackable	U.S. Express Freight Services	\$300 per freight handling unit	\$320 per freight handling unit
	International Priority Freight, International Economy Freight	\$300 per shipment	Effective Jan. 1, 2024 \$310 per shipment Effective Jan. 15, 2024 \$310 per freight handling unit
Address Correction	U.S. Express Package Services, International Express Package Services, International Express Freight Services, U.S. Ground Services, International Ground Service	\$21 per correction	\$22.50 per correction
	U.S. Express Freight Services	\$110 per correction	\$120 per correction
	Maximum charge with FedEx Express Multiweight® Pricing	\$147 per shipment	\$157.50 per shipment
	Maximum charge with FedEx Ground Multiweight® Pricing	\$63 per shipment	\$67.50 per shipment
Clearance Fee: Additional Entry Line Items	International Express Package Services, International Express Freight Services	\$3.20 per line over 3 lines	\$3.40 per line over 3 lines
Clearance Fee: Disbursement Fee	International Express Package Services, International Express Freight Services	Greater of \$12 or 2% of duty, tax, and merchandise processing fee charges	Greater of \$13 or 2% of duty, tax, and merchandise processing fee charges
Clearance Fee: Broker Document Transfer	International Express Package Services, International Express Freight Services	\$45 per shipment	\$48 per shipment
Clearance Fee: Broker In-Bond Transfer	International Express Package Services, International Express Freight Services	\$85 per shipment	\$90 per shipment
Clearance Fee: Entry Copy	International Express Package Services, International Express Freight Services	\$2 per entry	\$2 per entry
Clearance Fee: Entry of Goods Pursuant to U.S. Depart of Defense Contracts	International Express Package Services, International Express Freight Services	\$50 per shipment	\$53 per shipment
Clearance Fee: Live Entry Processing	International Express Package Services, International Express Freight Services	\$25 per shipment	\$26 per shipment
Clearance Fee: Prior Notice for Food and Food Products	International Express Package Services, International Express Freight Services	\$12 per shipment	\$13 per shipment
Clearance Fee: Storage	International Express Package Services, International Express Freight Services	Beginning on the third day a shipment is caged at the clearance location, we will assess a fee of \$0.08 per kg. per Business Day plus a base fee of \$20.	Beginning on the third day a shipment is caged at the clearance location, we will assess a fee of \$0.08 per kg. per Business Day plus a base fee of \$20.



Surcharge name	Applicable services	2023	2024
Delivery Area Surcharge	U.S. Express Package Services (Residential)	\$5.55 per package	\$5.85 per package
	U.S. Express Package Services, U.S. Ground Services (Extended Residential)	\$7.15 per package	\$7.70 per package
	U.S. Express Package Services, U.S. Ground Services (Commercial)	\$3.70 per package	\$3.95 per package
	U.S. Express Package Services, U.S. Ground Services (Extended Commercial)	\$4.50 per package	\$4.90 per package
	U.S. Express Package Services, U.S. Ground Services (Remote Commercial, Remote Residential)	\$13.25 per package	\$14.25 per package
	Express Alaska Package Services, Ground Alaska Package Services (Residential, Commercial)	\$38 per package	\$40.50 per package
	Express Hawaii Package Services, Ground Hawaii Package Services (Residential, Commercial)	\$12 per package	\$13 per package
	U.S. Ground Services (Residential)	\$5.30 per package	\$5.70 per package
	Maximum charge with FedEx Express Multiweight Pricing (Residential, Commercial, Extended Residential, Extended Commercial, Remote Commercial, Remote Residential)	\$18.50 per shipment (Commercial)	\$19.75 per shipment (Commercial)
		\$22.50 per shipment (Extended Commercial)	\$24.50 per shipment (Extended Commercial)
		\$27.75 per shipment (Residential)	\$29.25 per shipment (Residential)
		\$35.75 per shipment (Extended Residential)	\$38.50 per shipment (Extended Residential)
		\$66.25 per shipment (Remote Commercial, Remote Residential)	\$71.25 per shipment (Remote Commercial, Remote Residential)
	Maximum charge with FedEx Ground Multiweight Pricing (Residential, Extended Residential, Commercial, Extended Commercial, Remote Commercial, Remote Residential)	\$26.50 per shipment (Residential)	\$28.50 per shipment (Residential)
		\$18.50 per shipment (Commercial)	\$19.75 per shipment (Commercial)
\$22.50 per shipment (Extended Commercial)		\$24.50 per shipment (Extended Commercial)	
\$35.75 per shipment (Extended Residential)		\$38.50 per shipment (Extended Residential)	
\$66.25 per shipment (Remote Commercial, Remote Residential)		\$71.25 per shipment (Remote Commercial, Remote Residential)	
Delivery Reattempt	U.S. Express Freight Services	Greater of \$80.50 per shipment or \$0.088 per lb.	Greater of \$86 per shipment or \$0.094 per lb.
Extended Service Area Delivery	U.S. Express Freight Services	\$215 per shipment	\$230 per shipment
Extended Service Area Pickup	U.S. Express Freight Services, International Premium	\$215 per shipment	\$230 per shipment
Extra Services Charge	U.S. Express Freight Services, International Premium	\$119 per handler hour (\$119 minimum)	\$126 per handler hour (\$126 minimum)



Surcharge name	Applicable services	2023	2024
FedEx Priority Alert	U.S. Express Package Services	\$16.00 per package	\$17 per package
	U.S. Express Freight Services	\$160 per freight handling unit	\$170 per freight handling unit
	International First, International Priority, International Priority Direct Distribution	Greater of \$27 per shipment or \$0.54 per lb.	Greater of \$28.50 per shipment or \$0.57 per lb.
	International Priority Freight	Greater of \$220 per shipment or \$0.22 per lb.	Greater of \$230 per shipment or \$0.23 per lb.
FedEx Priority Alert Plus	U.S. Express Package Services	Greater of \$18.75 or \$0.53 per lb.	Greater of \$19.75 or \$0.56 per lb.
	U.S. Express Freight Services	Greater of \$187.50 per freight handling unit or \$0.32 per lb.	Greater of \$199 per freight handling unit or \$0.34 per lb.
	International First, International Priority, International Priority Direct Distribution	Greater of \$32 per shipment or \$0.64 per lb.	Greater of \$34 per shipment or \$0.68 per lb.
	International Priority Freight	Greater of \$270 per shipment or \$0.27 per lb.	Greater of \$290 per shipment or \$0.29 per lb.
Ground Unauthorized Package Charge	U.S. Ground Services, International Ground Service	\$1,150 per package	\$1,250 per package
Ground Weekly Pickup Fee	U.S. Ground Services, International Ground Service	\$20 per week (invoiced weekly shipping charges of \$75 or more)	\$21.50 per week (invoiced weekly shipping charges of \$75 or more)
		\$40 per week (invoiced weekly shipping charges of less than \$75)	\$43 per week (invoiced weekly shipping charges of less than \$75)
Hazardous Materials	FedEx Ground	\$48 per package	\$51 per package
	FedEx Home Delivery, International Ground Service	Limited Quantity only; no charge applies	Limited Quantity only; no charge applies
Inside Delivery Charge	U.S. Express Freight Services	Greater of \$132.50 per shipment or \$0.087 per lb.	Greater of \$141.50 per shipment or \$0.093 per lb.
Inside Pickup Charge	U.S. Express Freight Services, International Premium	Greater of \$132.50 per shipment or \$0.087 per lb.	Greater of \$141.50 per shipment or \$0.093 per lb.
International Out-of-Delivery-Area (Package)	International Express Package Services	Tier A: \$3.80 per shipment	Tier A: \$3.95 per shipment
International Out-of-Pickup-Area (Package)		Tier B: Greater of \$49 per shipment or \$0.49 per lb.	Tier B: Greater of \$49 per shipment or \$0.49 per lb.
		Tier C: Greater of \$64 per shipment or \$0.64 per lb.	Tier C: Greater of \$64 per shipment or \$0.64 per lb.
International Out-of-Delivery-Area (Freight)	International Priority Freight, International Economy Freight	Tier B: Greater of \$49 per shipment or \$0.49 per lb.	Tier B: \$230 per shipment
International Out-of-Pickup-Area (Freight)		Tier C: Greater of \$64 per shipment or \$0.64 per lb.	Tier C: \$300 per shipment
Metro Service Area Delivery	U.S. Express Freight Services	\$215 per shipment	\$230 per shipment
Metro Service Area Pickup	U.S. Express Freight Services, International Premium	\$215 per shipment	\$230 per shipment
Missing or Invalid Account Number (including account number correction)	U.S. Express Package Services, International Express Package Services, U.S. Express Freight Services, International Express Freight Services, U.S. Ground Services, International Ground Service	\$21 per shipment	\$22.50 per shipment
Northern Canada Surcharge	International Ground Service	\$93 per package (70 lbs. or less)	\$99 per package (70 lbs. or less)
		\$145 per package (more than 70 lbs.)	\$154 per package (more than 70 lbs.)
Oversize Charge	International Express Package Services	\$170 per shipment	Effective Jan. 1, 2024 \$175 per shipment
	International Ground Service	\$170 per package	Effective Jan. 15, 2024 \$175 per package





Surcharge name	Applicable services	2023	2024
Oversize Charge (Cont.)	U.S. Express Package Services, U.S. Ground Services	Zone 2: \$135 per package Zones 3–4 <sup>1</sup> : \$145 per package Zones 5–6: \$160 per package Zones 7+ <sup>2</sup> : \$170 per package	Zone 2: \$160 per package Zones 3–4 <sup>1</sup> : \$175 per package Zones 5–6: \$190 per package Zones 7+ <sup>2</sup> : \$205 per package
	FedEx Home Delivery	Zone 2: \$160 per package Zones 3–4 <sup>1</sup> : \$170 per package Zones 5–6: \$190 per package Zones 7+ <sup>2</sup> : \$200 per package	Zone 2: \$190 per package Zones 3–4 <sup>1</sup> : \$205 per package Zones 5–6: \$230 per package Zones 7+ <sup>2</sup> : \$240 per package
Payer Rebilling	U.S. Express Package Services, International Express Package Services, U.S. Express Freight Services	\$21 per shipment	\$22.50 per shipment
Reroute of Shipment	U.S. Express Package Services	\$21 per package	\$22.50 per package
	U.S. Express Freight Services	\$110 per shipment	\$120 per shipment
	Maximum charge with FedEx Express Multiweight Pricing	\$147 per shipment	\$157.50 per shipment
Residential Delivery Charge	U.S. Express Package Services	\$5.80 per package	\$6.15 per package
	International Express Package Services (to Canada, and U.S. import-rated shipments from all origins)	\$5.80 per shipment	\$6.15 per shipment
	Maximum charge with FedEx Express Multiweight Pricing	\$52.20 per shipment	\$55.35 per shipment
	U.S. Ground Services, International Ground Service	\$5.50 per package	\$5.55 per package
	FedEx Home Delivery	\$5.15 per package	\$5.55 per package
	Maximum charge with FedEx Ground Multiweight Pricing	\$49.50 per shipment	\$49.95 per shipment
	U.S. Express Freight Services, International Express Freight Services (to Canada, and U.S. import-rated shipments from all origins)	\$185 per shipment	\$200 per shipment
Residential Pickup Charge	U.S. Express Freight Services, International Premium	\$185 per shipment	\$200 per shipment

\*Please check your FedEx shipping agreement to determine the net impact of these changes on your shipping costs.

Please consult the FedEx Service Guide for additional details regarding applicable services and definitions.



## MGN Logistics Technology

### ***Leveraging Technology to Optimize Parcel Shipping Costs***

Parcel shipping and carrier agreements have become very complex. With pages and pages of varying rates, discounts, surcharges and multiple zones, understanding these agreements can be nearly impossible for most shippers. Even the most sophisticated corporate shippers require specialized software to analyze these agreements and make sense of them. This is where MGN Logistics can help. MGN Logistics is a leading provider of IT solutions for the freight management and transportation industry. Their Transportation Management Software or TMS platform has been the backbone of some of the country's largest 3PLs for many years. Now, this innovative technology is being made available to individual private companies to assist in improving operational efficiencies. Imagine having on-demand technology that can definitively illustrate the potential impacts to changes in your UPS or FedEx carrier pricing agreements. Data driven technology that you can leverage, to level the playing field for effective carrier negotiations that produces results!

### ***We call it "RAMS"***

RAMS (Rating Agreement Management System) is a proprietary technology that provides on-demand parcel rate comparisons based on your actual shipment history. It allows re-rating across carrier agreements, pricing proposals, and year to year carrier base rate changes. RAMS eliminates the guess work and allows informed decision making. This technology was only available to the largest corporate entities, but it is now available to shippers of all sizes.

### ***How does RAMS benefit you?***

During a bid or agreement restructuring, your newly proposed carrier agreement data is uploaded to the RAMS system, thereby determining how the proposed changes will impact your parcel spend. The RAMS system provides the ability to re-rate every individual historical shipment during a given time frame. Therefore, giving complete and accurate visibility of the impact of proposed service options, assessorial fees, fuel surcharges, and even DIM rated shipments. Unlike the carriers or any of MGN's competitors, they do not use averages to determine your projected bottom-line results, rather, they use actual shipment data detailing costs to the penny.



This sophisticated technology benefits shippers by providing actionable intelligence. For example, prior to signing any carrier agreement, the client knows exactly what the impact of the proposed pricing changes will be, and how it will affect their bottom line. Once the new agreement is published, MGN can then provide a weekly, monthly or quarterly savings report. This report illustrates savings achieved by service levels and surcharges, throughout the lifetime of the agreement.

Additionally, the RAMS system provides an annual General Rate Increase (GRI) Impact Analysis. Each year, the carriers announce changes to their base rates, minimum charges and surcharges or assessorial fees. Carriers typically state this general rate increase as a flat percentage; however, this is really an “average” of all increases across all weights and services. Depending on your company’s unique shipping profile, your true increase could be significantly higher than that “average”. Understanding exactly how a carrier rate increase effects your business is powerful information. Having on-demand access to our proprietary technology is exactly the LEVERAGE your business needs to effectively navigate carrier negotiations and optimize your rates.

### **Summary**

The overall analysis of the 2024 GRI increase concludes that all services will be impacted. Your specific shipping profile will determine the true impact of these increases to your company.

To truly understand what impact this has on your business, MGN Logistics can provide you with a thorough and detailed analysis.

Our unique industry **Knowledge**, combined with our superior web-based **Technology** will provide you with the **Leverage** needed to optimize your carrier agreements.

For a no-obligation consultation and business review, please email us at [sales@mgnlogistics.com](mailto:sales@mgnlogistics.com).

